

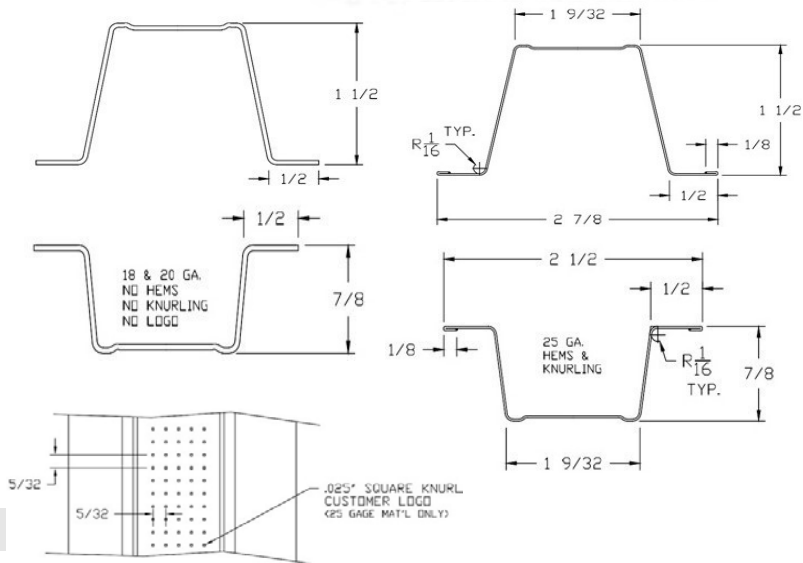


www.studsunlimited.com

Product Name: Hat Channel

Important Properties Notes:

- Calculated properties are based on AISI S100-12 with S2-10 Supplement, North American Specification for Design of Cold-Formed Steel Structural Members.
- The centerline bend radius is based on inside corner radii shown in thickness chart.
- Effective properties incorporate the strength increase from the cold work of forming as applicable per AISI A7.2.
- Tabulated gross properties are based on full-unreduced cross section of the studs, away from punchouts.
- For deflection calculations, use the effective moment of inertia. Allowable moment includes cold-work of forming.



Properties

Properties

depth	width	lip	thick	radius	F_y	F_u	Area	Weight	I_x	S_x	r_x	I_y	r_y	A_g	I_{x0}	S_{x0}	M_a
in	in	in	in	in	ksi	ksi	in ²	plf	in ⁴	in ³	in	in ⁴	in	in ²	in ⁴	in ³	k-in

Hat Channel (Drywall Channel)

087F125-18	0.8750	2.5000	0.5000	0.0188	0.0625	33	45	0.0783	0.2663	0.0098	0.0225	0.3545	0.0441	0.7503	0.0762	0.0096	0.0217	0.4282
087F125-30	0.8750	2.5000	0.5000	0.0312	0.0625	33	45	0.1204	0.4093	0.0139	0.0302	0.3399	0.0599	0.7052	0.1196	0.0138	0.0298	0.5886
087F125-43	0.8750	2.5000	0.5000	0.0451	0.0625	33	45	0.1736	0.5902	0.0200	0.0428	0.3398	0.0863	0.7053	0.1736	0.0200	0.0428	0.8462
150F125-18	1.5000	2.5000	0.5000	0.0188	0.0625	33	45	0.1003	0.3412	0.0332	0.0430	0.5752	0.0684	0.8258	0.0794	0.0325	0.0427	0.8439
150F125-30	1.5000	2.5000	0.5000	0.0312	0.0625	33	45	0.1611	0.5476	0.0510	0.0649	0.5627	0.1051	0.8078	0.1506	0.0505	0.0639	1.2628
150F125-43	1.5000	2.5000	0.5000	0.0451	0.0625	33	45	0.2328	0.7916	0.0734	0.0924	0.5616	0.1532	0.8112	0.2328	0.0734	0.0924	1.8256

Additional Specification Information

Studs Unlimited is an SFIA member. Studs Unlimited acts in accordance with the product and quality standards required by the SFIA program.

Studs Unlimited meets or exceeds ASTM C955, A653, and A1003.

LEED Specification Information

Materials & Resources Credit 2: Construction Waste Management – Studs Unlimited Steel Framing Products are formed from steel and are 100% recyclable. **(1 point)**

Materials & Resources Credit 4: Recycled Content intends to increase demand for building products that incorporate recycled content materials, therefore reducing impacts resulting from extraction and processing of new virgin materials. As discussed and demonstrated below, North American steel building products contribute positively toward points under Credits 4.1 and 4.2. The following is required by LEED-NC Versions 2.2 and 2009:

Credit 4.1 (1 point) Use materials with recycled content such that the sum of post-consumer recycled content plus one-half of pre-consumer content constitutes at least 10% (based on cost) of the total value of the materials in the project.

Credit 4.2 (1 point) Use materials with recycled content such that the sum of post-consumer recycled content plus one-half of pre-consumer content constitutes at least 20% of the total value of the materials in the project.

Materials & Resources Credit 5: Regional Materials - Contact Studs Unlimited directly for information at bjpowell@studsunlimited.com. Studs Unlimited is located in Oklahoma City, Oklahoma. **(1 point)**